

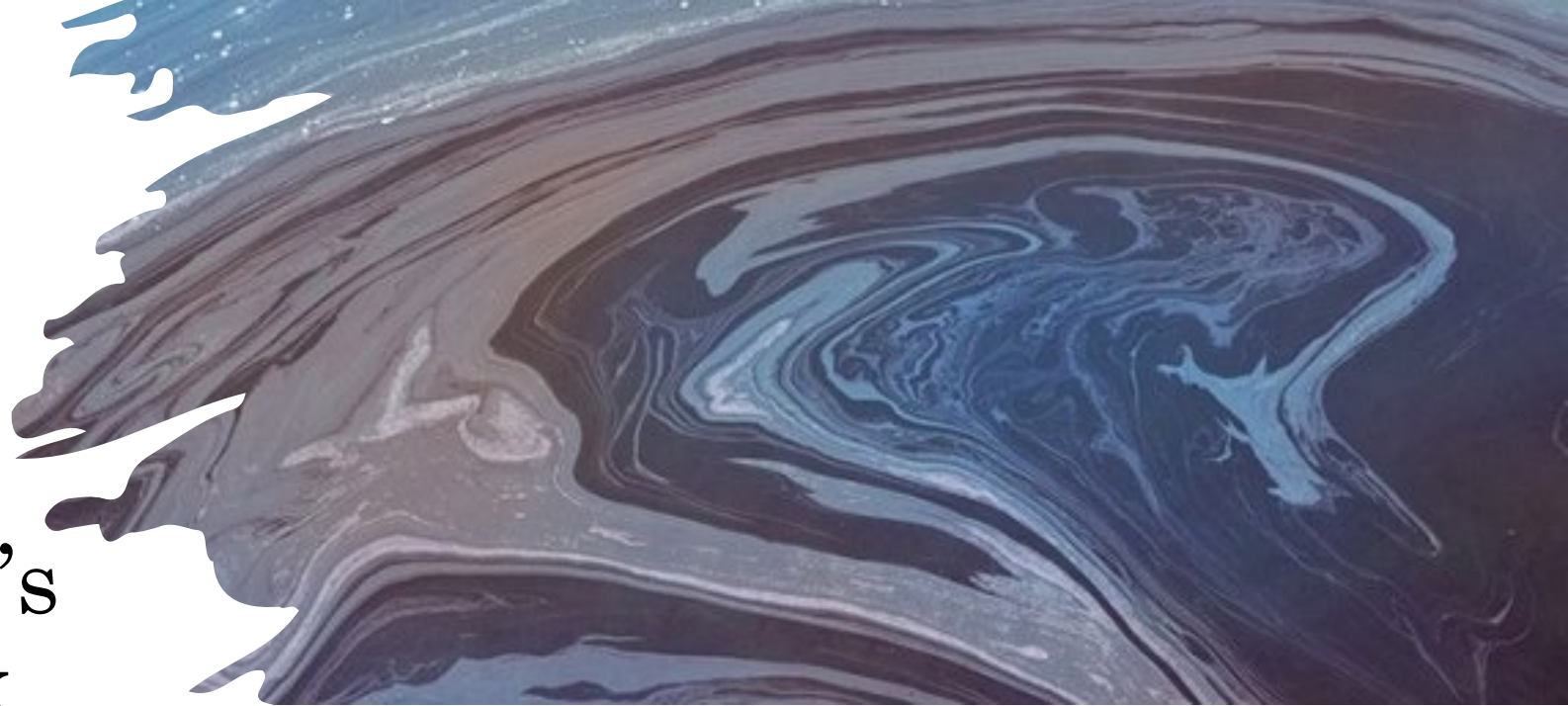
Standardizing the Methodology for Revising the US EPA's Water Quality Index

Julia Monsarrat

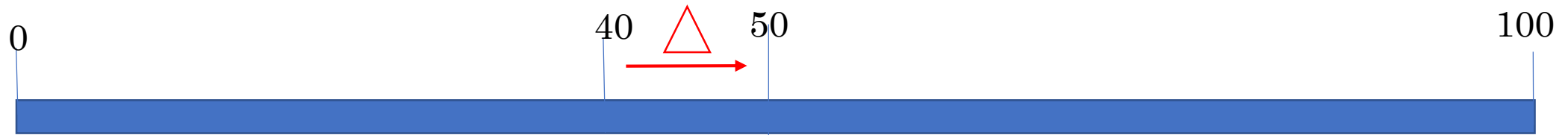
ORISE Research Fellow

U.S. Environmental Protection Agency

In collaboration with Ahmed Rachid El-Khattabi, Adam Theising, Gouri Mahadwar, Todd Doley, Joel Corona, Morgan Teachey, and Steve Whitlock



Water Quality Index (WQI)



WTP estimate from
improvement in WQ

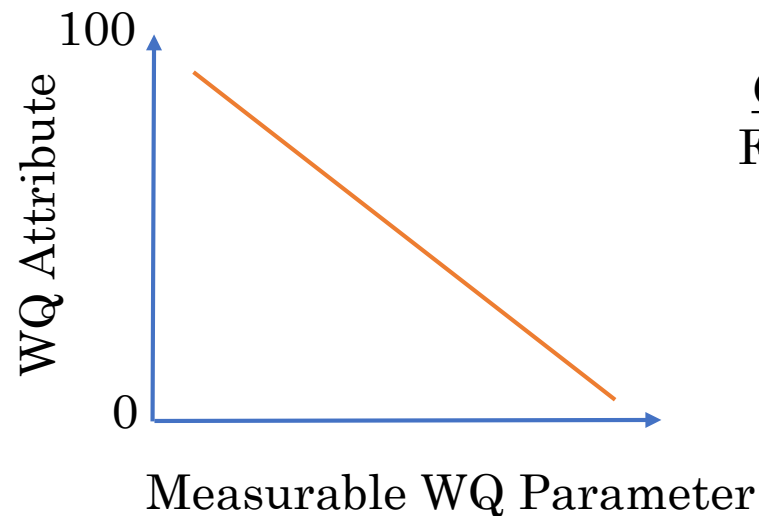
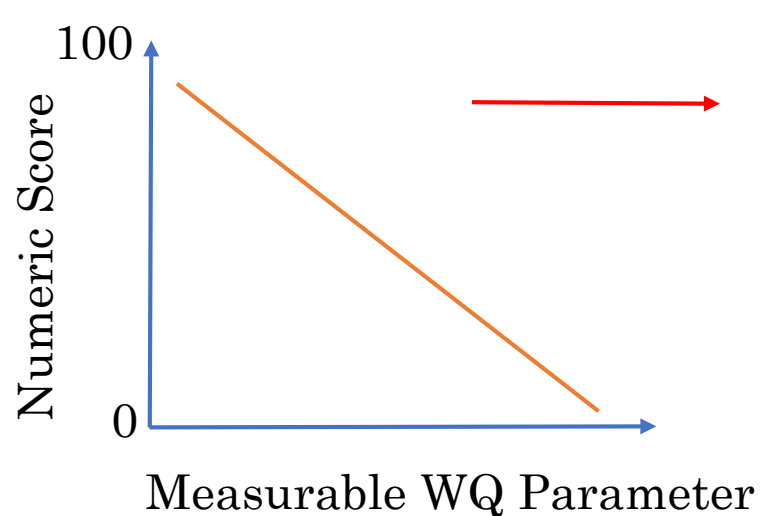


Willingness-to-Pay (WTP) estimates derived from the WQI are applied to CBAs to monetize benefits of reductions in water pollution from EPA policies.

Two Limitations of the WQI in Economic Analyses

#1: Sub-index curves do not directly link WQ parameters to WQ attributes people value

#2: Parameters used to measure WQ have changed over time



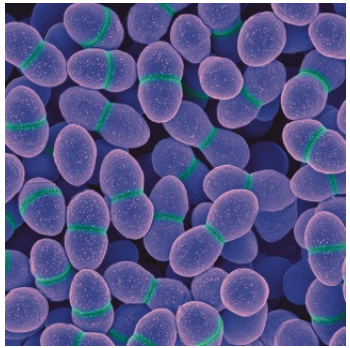
Fecal Indicator Bacteria (FIB):

Current WQI
Fecal Coliform

Future WQI
Fecal Coliform
E. coli
Enterococcus

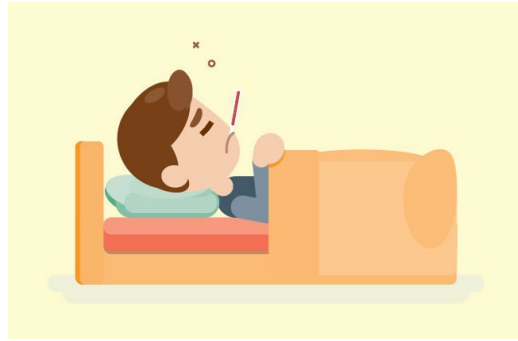
Proposed Revision of the WQI

Measurable
WQ Parameter



Enterococcus

Benefit Relevant Indicator
(WQ Attribute)



Risk of Illness

Use



Swimming

WQI Score

100

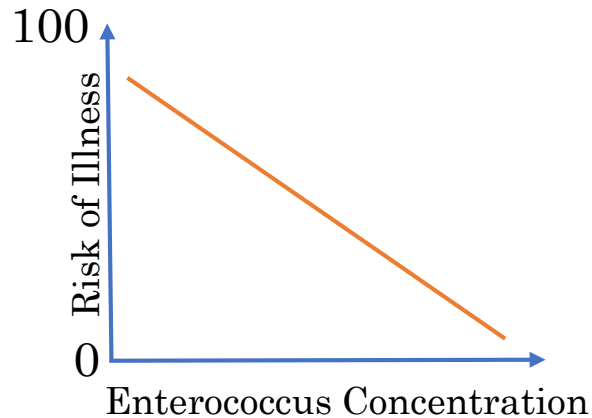


40

0



Waterbody's Water
Quality Score





Questions or Comments are
Welcome!

Julia Monsarrat
ORISE Research Fellow
U.S. Environmental Protection Agency
monsarrat.julia@epa.gov